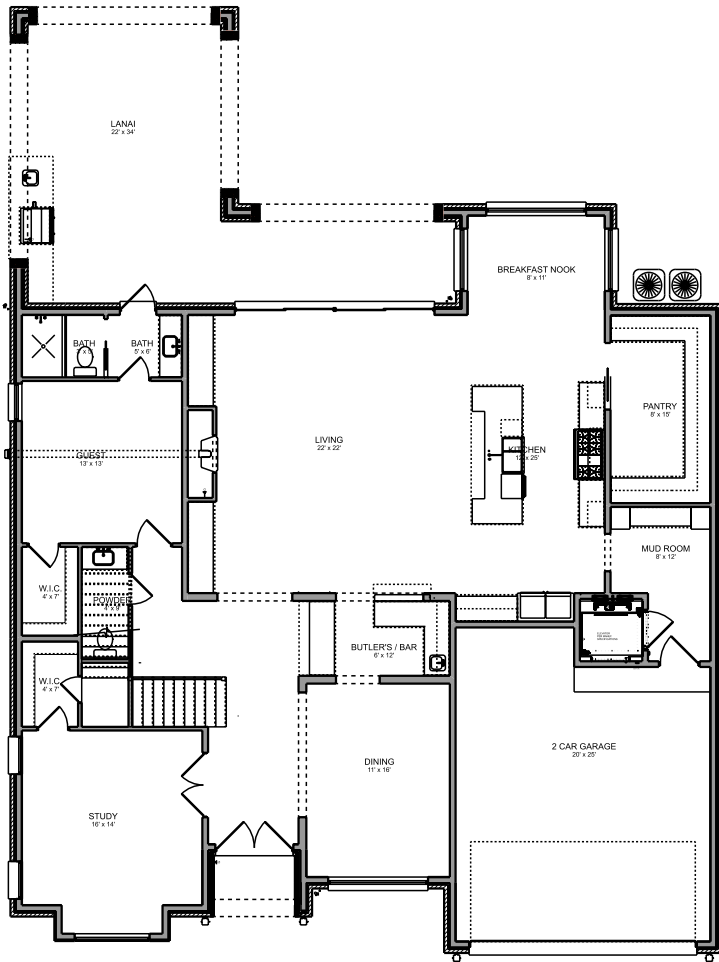




3114 NEWCASTLE DRIVE	
WIDTH: 57' - 0"	DEPTH: 75' - 9"
FIRST FLOOR LIVING:	2,405 SQ.FT.
SECOND FLOOR LIVING:	2,667 SQ.FT.
COVERED PORCHES:	607 SQ.FT.
GARAGE:	522 SQ.FT.
<hr/>	
TOTAL LIVING:	5,071 SQ.FT.
TOTAL PROJECT AREA:	6,200 SQ.FT.

RENDERING



FIRST FLOOR PLAN



SECOND FLOOR PLAN