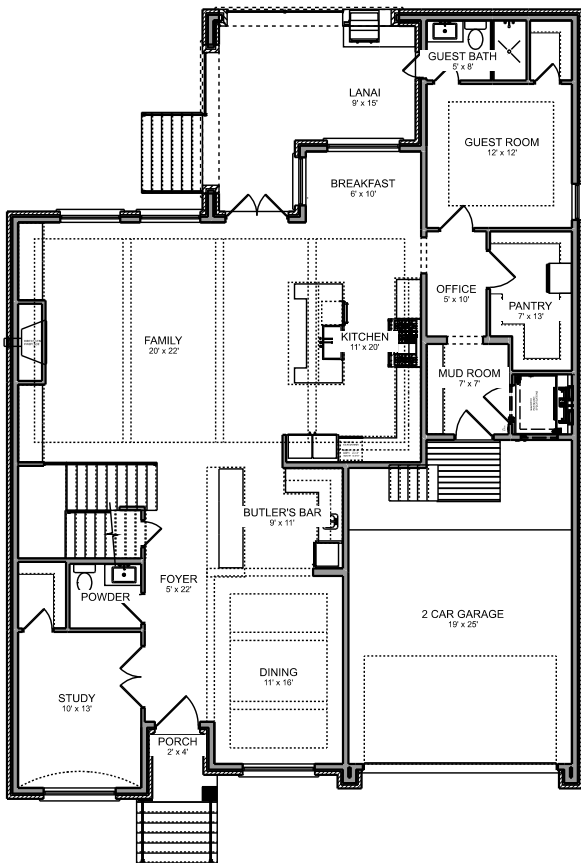
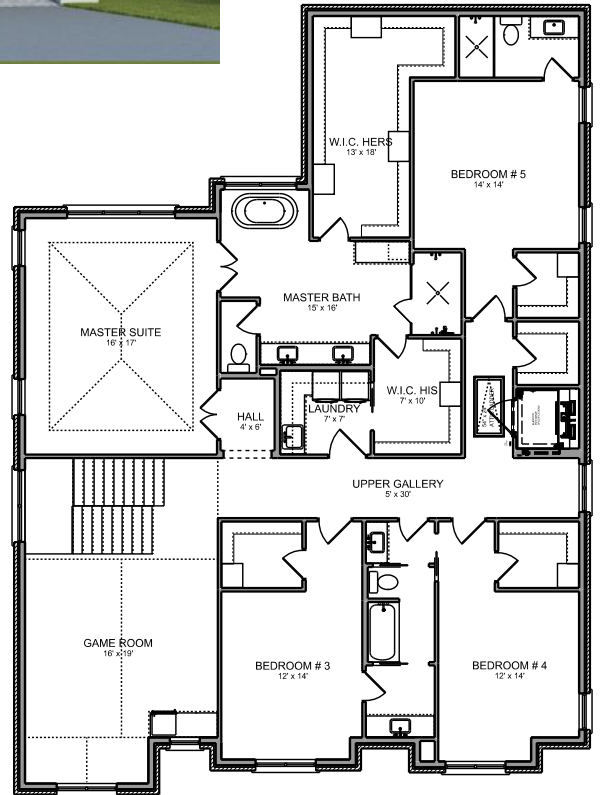




Laird Investments
KIRK LAIRD
281.541.5949



FIRST FLOOR



SECOND FLOOR

544 WISTERIA	
WIDTH: 48' - 0"	DEPTH: 65' - 4"
FIRST FLOOR LIVING:	1,962 SQ.FT.
SECOND FLOOR LIVING:	2,516 SQ.FT.
COVERED PORCHES:	315 SQ.FT.
GARAGE:	548 SQ.FT.
TOTAL LIVING:	5,341 SQ.FT.
TOTAL PROJECT AREA:	7,500 SQ.FT.



THIS PLAN IS COPYRIGHT PROTECTED AND THE SOLE PROPERTY OF GENE GILES AND CREEKSTONE GROUP LLC. ANY UNAUTHORIZED COPIES OR DISTRIBUTION IS A VIOLATION OF FEDERAL COPYRIGHT LAW AND SUBJECT TO PROSECUTION UNDER THE GUIDELINES OF THE FEDERAL COPYRIGHT ACT.