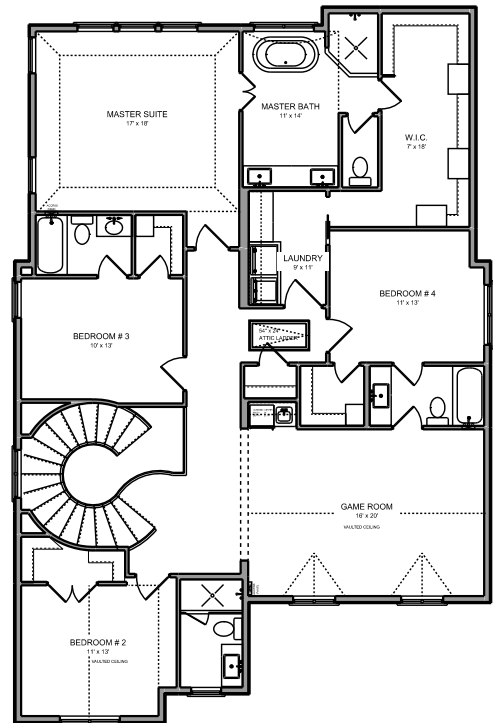


FIRST FLOOR

3935 COLERIDGE	
WIDTH: 39' - 6"	DEPTH: 59' - 6"
FIRST FLOOR LIVING:	1,616 SQ.FT.
SECOND FLOOR LIVING:	1,951 SQ.FT.
COVERED PORCHES:	23 SQ.FT.
GARAGE:	433 SQ.FT.
TOTAL LIVING:	3,567 SQ.FT.
TOTAL PROJECT AREA:	4,000 SQ.FT.



BUILDER:
kirk@lairdhomes.net
 281-541-5949



SECOND FLOOR

Rendering subject to change by builder